



Sd = 200 mm

- small housing dimensions
- very low mass (4 g)
- long sensing range/small blind range



UNDK 10 Sd = 200 mm

Ultrasonic proximity sensors *SONUS*

**general data**

sensing range sd	10 ... 200 mm
scanning range far limit Sde	30 ... 200 mm
hysteresis typ.	4% Sde
repeatability	< 0,5 mm
temperature drift	< 0,18% Sde/K
adjustment	Teach-in
response time ton	< 15 ms
release time toff	< 15 ms
alignment aid	target display flashing
sonic frequency	380 kHz
output indicator	LED green

**electrical data**

voltage supply range +Vs	12 ... 30 VDC
current consumption max.	35 mA
output current	< 200 mA
voltage drop Vd	< 2 VDC
residual ripple	< 10% Vs
short circuit protection	yes
reverse polarity protection	yes

**mechanical data**

type	rectangular
housing material	plastic (ASA)
width / diameter	10,4 mm
height / length	27 mm
depth	14 mm

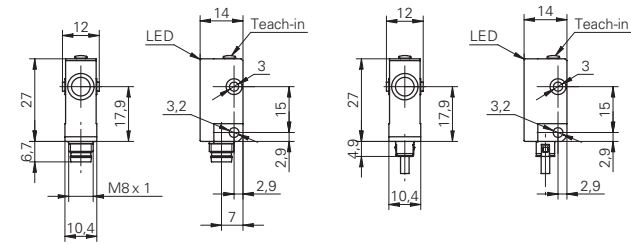
**ambient conditions**

operating temperature	-10 ... +60 °C
protection class	IP 67

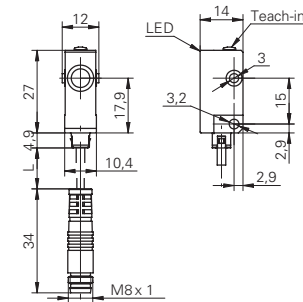
**accessories**

connectors	ESW 31A, ESG 32A
------------	------------------

**dimension drawings**

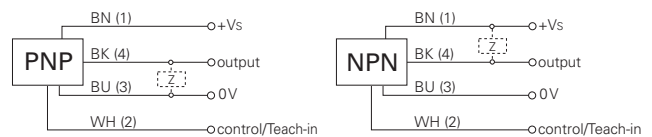


**flylead connector version**

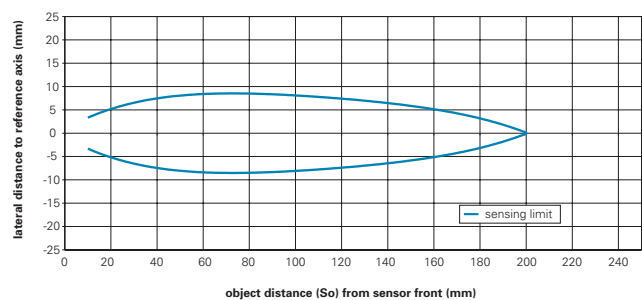


standard cable length 200 mm

**connection diagrams**



**typical sonic cone profile**



standard square target, size 15 x 15 mm, positioned perpendicularly to sensor's reference axis

order reference	output circuit	connection types
UNDK 10N8914	NPN make function (NO) / break function (NC)	cable
UNDK 10N8914/KS35A	NPN make function (NO) / break function (NC)	flylead connector M8
UNDK 10N8914/S35A	NPN make function (NO) / break function (NC)	connector M8
UNDK 10P8914	PNP make function (NO) / break function (NC)	cable
UNDK 10P8914/KS35A	PNP make function (NO) / break function (NC)	flylead connector M8
UNDK 10P8914/S35A	PNP make function (NO) / break function (NC)	connector M8



Sd = 200 mm

- small housing dimensions
- very low mass (4 g)
- high resolution



UNDK 10 Sd = 200 mm

**general data**

sensing range sd	20 ... 200 mm
scanning range close limit Sdc	20 ... 200 mm
scanning range far limit Sde	20 ... 200 mm
repeatability	< 0,5 mm
resolution	< 0,3 mm
adjustment	Teach-in
sonic frequency	380 kHz
response time ton	< 60 ms
release time toff	< 60 ms
alignment aid	target display flashing
light indicator	yellow LED / red LED
temperature drift	< 2% of distance to target So

**electrical data**

voltage supply range +Vs	15 ... 30 VDC
current consumption max.	35 mA
output circuit	voltage output
output signal	0 ... 10 V / 10 ... 0 V
output current	< 20 mA
residual ripple	< 10% Vs
short circuit protection	yes
reverse polarity protection	yes

**mechanical data**

type	rectangular
housing material	plastic (ASA)
width / diameter	10,4 mm
height / length	27 mm
depth	14 mm

**ambient conditions**

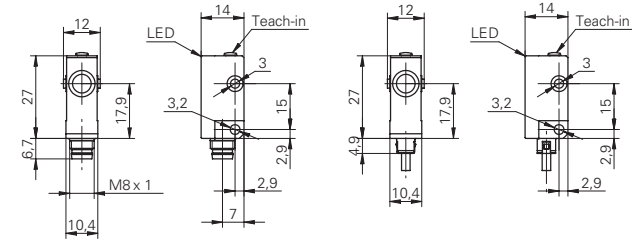
operating temperature	-10 ... +60 °C
protection class	IP 67

**accessories**

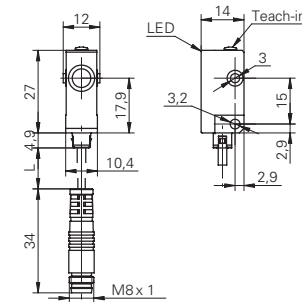
connectors	ESW 31A, ESG 32A
------------	------------------

order reference	connection types
UNDK 10U6914	cable
UNDK 10U6914/KS35A	flylead connector M8
UNDK 10U6914/S35A	connector M8

**dimension drawings**

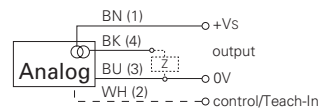


**flylead connector version**

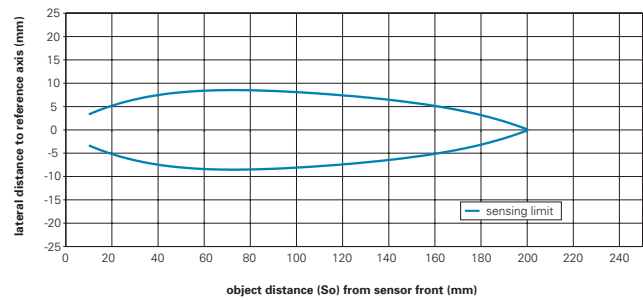


standard cable length 200 mm

**connection diagram**



**typical sonic cone profile**



standard square target, size 15 x 15 mm, positioned perpendicularly to sensor's reference axis

Ultrasonic analog sensors *SONUS*