

Sd = 2500 mm

- potentiometer
- synchronisation output
- long sensing range

general data

sensing range sd	350 ... 2500 mm
scanning range far limit Sde	350 ... 2500 mm
hysteresis typ.	4% Sde
repeatability	< 1 mm
synchronization	yes
temperature drift	< 0,18% Sde/K
adjustment	potentiometer
response time ton	< 160 ms
release time toff	< 160 ms
alignment aid	target display flashing
sonic frequency	120 kHz
output indicator	LED green

electrical data

voltage supply range +Vs	12 ... 30 VDC
current consumption max.	35 mA
output current	< 200 mA
voltage drop Vd	< 2 VDC
residual ripple	< 10% Vs
short circuit protection	yes
reverse polarity protection	yes

mechanical data

type	cylindrical
housing material	brass nickel plated
width / diameter	30 mm
height / length	95 mm

ambient conditions

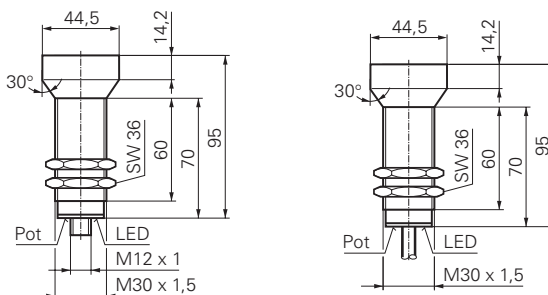
operating temperature	-25 ... +60 °C
protection class	IP 67

accessories

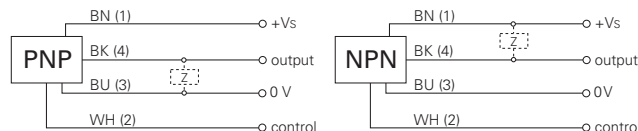
connectors	ES 14, ESW 33A, ESG 34A
------------	-------------------------



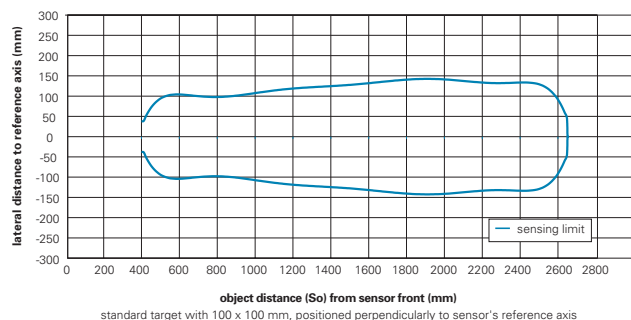
dimension drawings



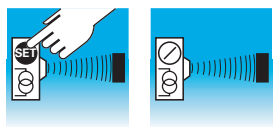
connection diagrams



typical sonic cone profile



order reference	output circuit	connection types
UNAM 50N1721	NPN make function (NO)	cable
UNAM 50N1721/S14	NPN make function (NO)	connector M12
UNAM 50N3721	NPN break function (NC)	cable
UNAM 50N3721/S14	NPN break function (NC)	connector M12
UNAM 50P1721	PNP make function (NO)	cable
UNAM 50P1721/S14	PNP make function (NO)	connector M12
UNAM 50P3721	PNP break function (NC)	cable
UNAM 50P3721/S14	PNP break function (NC)	connector M12



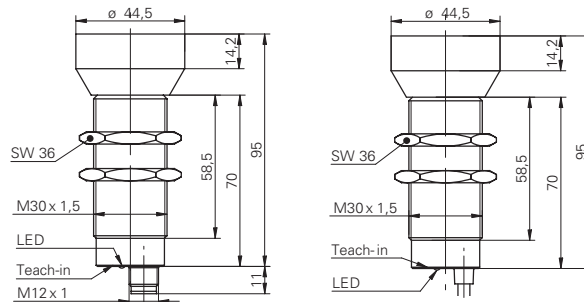
Sd = 2500 mm

- Teach-in or potentiometer
- 0 ... 10 V / 4 ... 20 mA
- signals of Teach-in version invertible



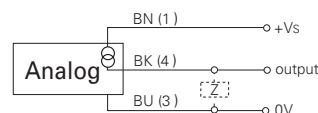
general data	
sensing range sd	400 ... 2500 mm
scanning range far limit Sde	400 ... 2500 mm
repeatability	< 1 mm
resolution	< 0,3 mm
sonic frequency	120 kHz
response time ton	< 160 ms
release time toff	< 160 ms
alignment aid	target display flashing
temperature drift	< 2% of distance to target So
potentiometer	
light indicator	LED green
Teach-in	
scanning range close limit Sdc	400 ... 2500 mm
light indicator	yellow LED / red LED
electrical data	
voltage supply range +Vs	15 ... 30 VDC
output current	< 20 mA
residual ripple	< 10% Vs
short circuit protection	yes
reverse polarity protection	yes
voltage output	
current consumption max.	35 mA
current output	
current consumption max.	55 mA
load resistance +Vs max.	< 1100 Ohm
load resistance +Vs min.	< 400 Ohm
mechanical data	
type	cylindrical
housing material	brass nickel plated
width / diameter	30 mm
height / length	95 mm
ambient conditions	
operating temperature	-10 ... +60 °C
protection class	IP 67
accessories	
connectors	ESW 33S, ESG 34S

dimension drawings

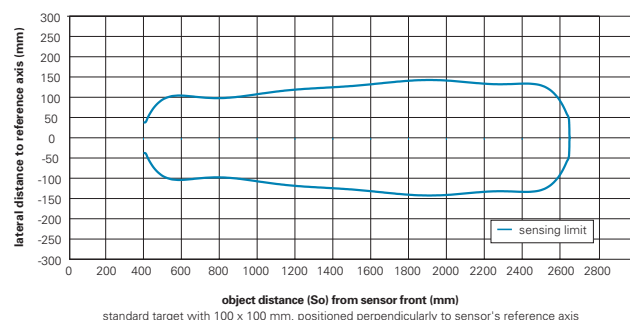


Teach-in = Teach-in or potentiometer

connection diagram



typical sonic cone profile



order reference	adjustment	output circuit	output signal	connection types
UNAM 50I6121	Teach-in	current output	4 ... 20 mA / 20 ... 4 mA	cable
UNAM 50I6121/S14	Teach-in	current output	4 ... 20 mA / 20 ... 4 mA	connector M12
UNAM 50U6121	Teach-in	voltage output	0 ... 10 V / 10 ... 0 V	cable
UNAM 50U6121/S14	Teach-in	voltage output	0 ... 10 V / 10 ... 0 V	connector M12
UNAM 50U9121	potentiometer	voltage output	0 ... 10 VDC	cable
UNAM 50U9121/S14	potentiometer	voltage output	0 ... 10 VDC	connector M12

UNAM 50 Sd = 2500 mm

Ultrasonic analog sensors