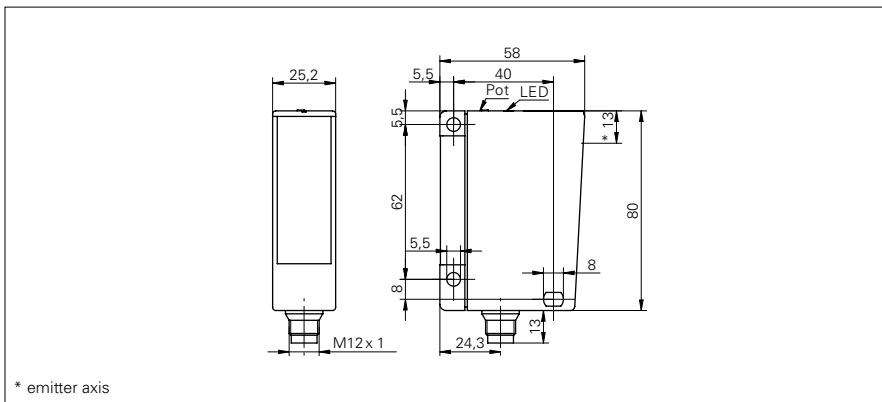


## Diffuse sensors with background suppression

### FHDK 26

#### sample drawing



#### general data

type	background suppression
light source	pulsed infrared diode
sensing distance $T_w$	120 ... 400 mm
sensing range $T_b$ (at $T_w$ max.)	10 ... 400 mm
sensing range $T_b$ (at $T_w$ min.)	8 ... 120 mm
light indicator	LED yellow
sensing distance adjustment	mechanical, 9 turn
wave length	880 nm

#### electrical data

response time / release time	< 1 ms
voltage supply range +Vs	10 ... 30 VDC
current consumption max.	45 mA
current consumption typ.	35 mA
voltage drop Vd	< 1,8 VDC
output function	light / dark operate
output current	< 200 mA
short circuit protection	yes
reverse polarity protection	yes

#### mechanical data

width / diameter	25 mm
height / length	80 mm
depth	58 mm
type	rectangular
housing material	plastic (ASA)
front (optics)	PMMA

#### ambient conditions

operating temperature	-25 ... +65 °C
protection class	IP 67

order reference	connection types	output circuit
<b>FHDK 26N5001/S14</b>	connector M12 4 pin	NPN
<b>FHDK 26P5001</b>	cable 4 pin, 2 m	PNP
<b>FHDK 26P5001/S14</b>	connector M12 4 pin	PNP

#### sample picture

